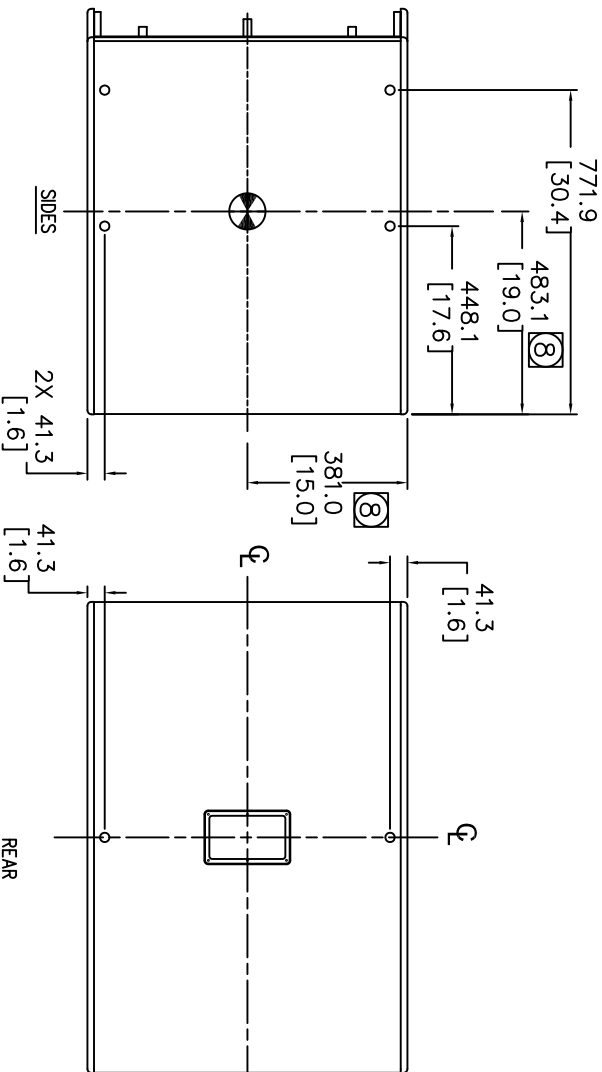
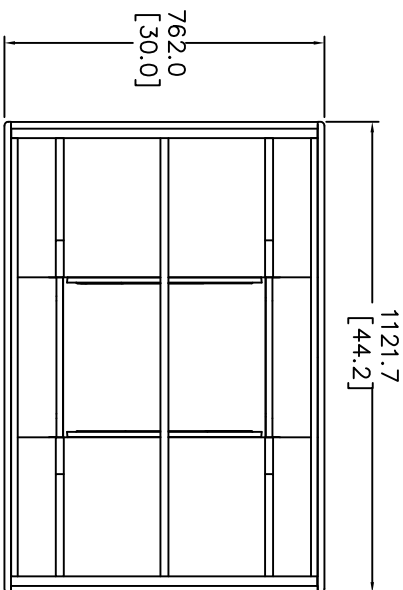
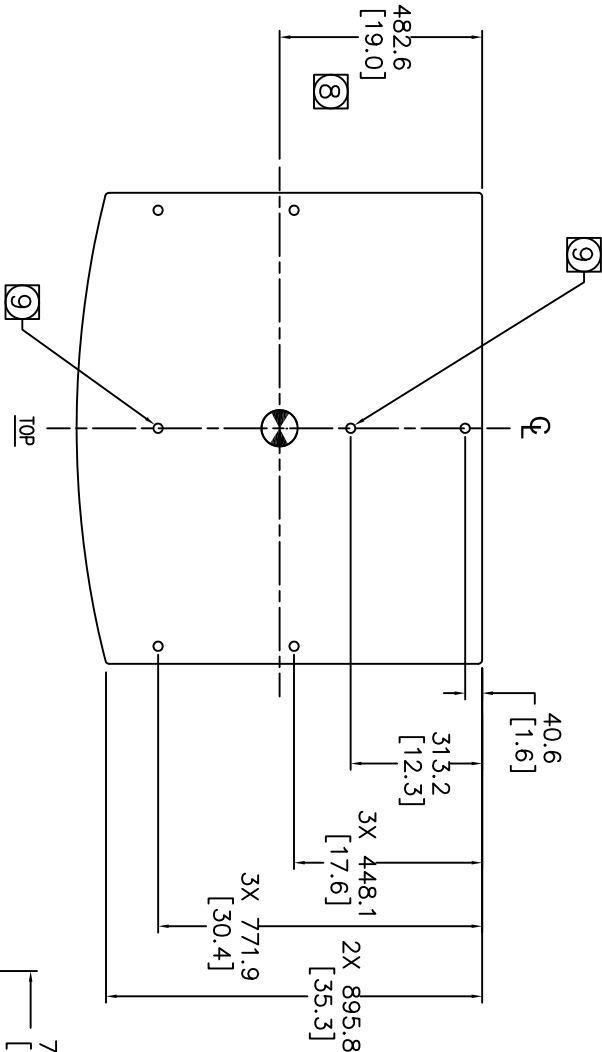


THESE DRAWINGS AND SPECIFICATIONS ARE THE PROPERTY OF JBL INCORPORATED. THEY ARE ISSUED IN STRICT CONFIDENCE AND SHALL NOT BE REPRODUCED OR USED AS THE BASIS FOR MANUFACTURE OR APPARATUS WITHOUT WRITTEN PERMISSION.

ALL MATERIAL SPECIFIED ON THIS DRAWING SHALL COMPLY WITH EUROPEAN DIRECTIVE 2002/95/EC. [1013]

REVISIONS					
CHG.	LTR	DESCRIPTION	DEPT	D.C	DATE
00648	A	RELEASE TO MARKETING	TH		
00805	B	REV. DIM OF TOP CENTER M10 LOC.	TH		



9 STACKING BRACKET POINTS: M10 THREADED NUT PLATES, 2X TOP AS INDICATED. NOT TO BE USED FOR OVERHEAD SUSPENSION.

8 INDICATED DIMENSIONS ARE TO CENTER OF GRAVITY (CG)  7. WEIGHT: 108.0 kg (238.0 LBS).

6. SUSPENSION POINTS: M10 THREADED SUSPENSION POINTS. 5X TOP, 5X BOTTOM, 4X LEFT, 4X RIGHT.

5. COMPONENTS: LF – 2X 2269H

4. INPUT CONNECTORS: NEUTRIK NL4 IN PARALLEL WITH 4 POSITION TERMINAL STRIP.

3. GRILLE: 14 GA. PERFORATED CRS, POWDERCOATED. BLACK.

2. MATERIALS: 15.8 MM BIRCH PLYWOOD.

1. FINISH: BLACK DURAFLEX

NOTES: (UNLESS OTHERWISE SPECIFIED)

TOLERANCES (UNLESS OTHERWISE SPECIFIED)

X.XX ± .063 INCH

X.X ± .125 INCH

ANGULAR TOLERANCE OF 0±30°

FRACTIONAL DIMENSIONS ± 1/32

DIMENSIONS ARE INCHES

ALL DIMENSIONS ARE FINISHED DIMENSIONS

DO NOT SCALE DRAWING

JBL JBL PROFESSIONAL
A Harman International Company
Northridge, California 91329 U.S.A.

CUSTOMER DRAWING: MD7

DRAWING NO.

446327

REV

B

SCALE

NTS

SHEET

1

OF

1